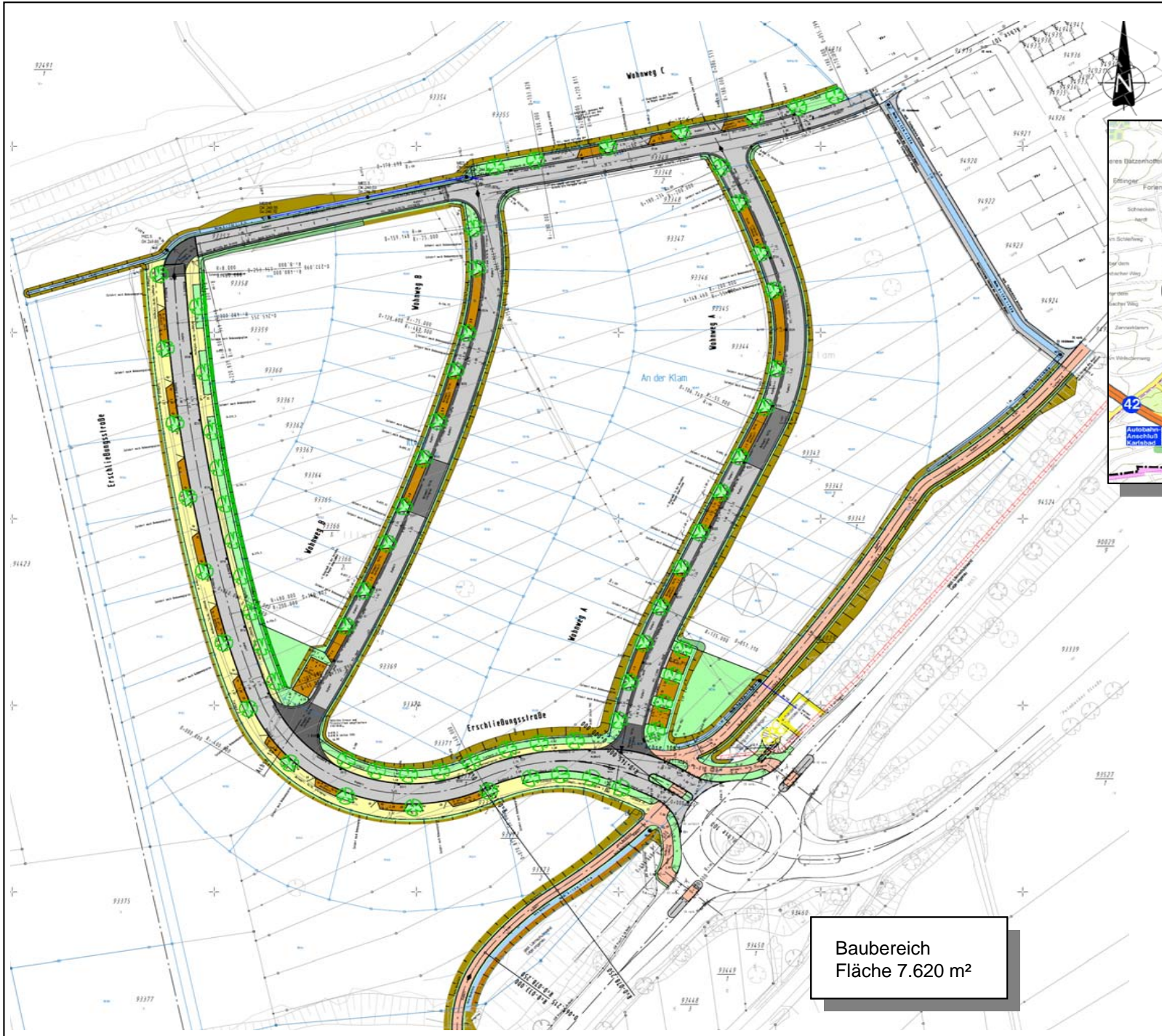
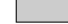

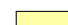
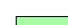

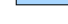




Schematische Darstellung !



-  Fahrbahn (StraÙe/ Wege)
-  Radweg/ Geh- und Radweg
-  Gehweg
-  Grünfläche/ Bankett
-  Entwässerungsmulde
-  Dammböschung
-  Einschnittböschung

Baubereich
Fläche 7.620 m²

Stadt Karlsruhe
- Tiefbauamt - 

An der Klam / Illwig
Anlage zur Bauausschussvorlage

Übersicht
S3 – Bauausführung
Herr Holler Tel.: 133-6050
Stand Juni 2013