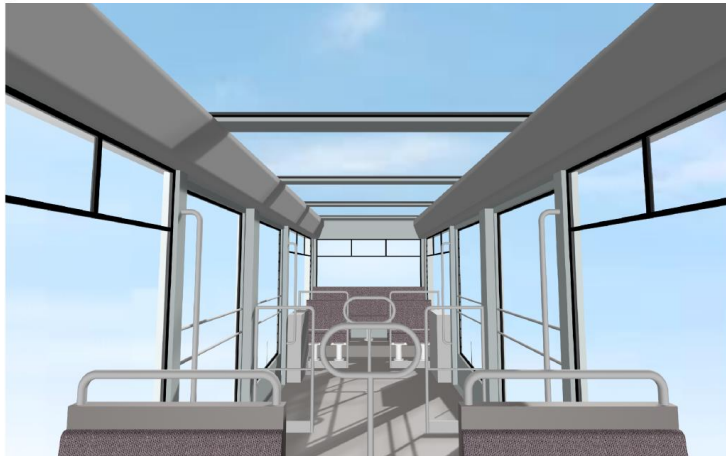
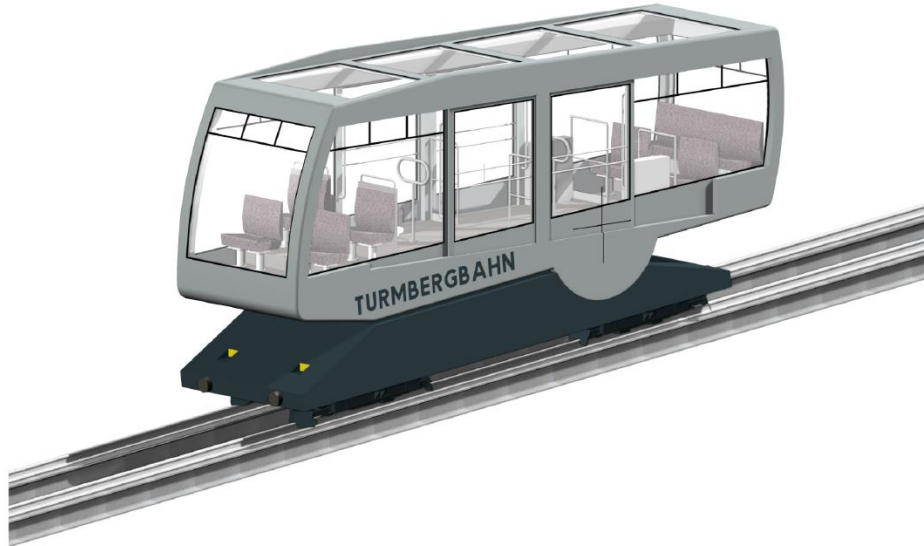
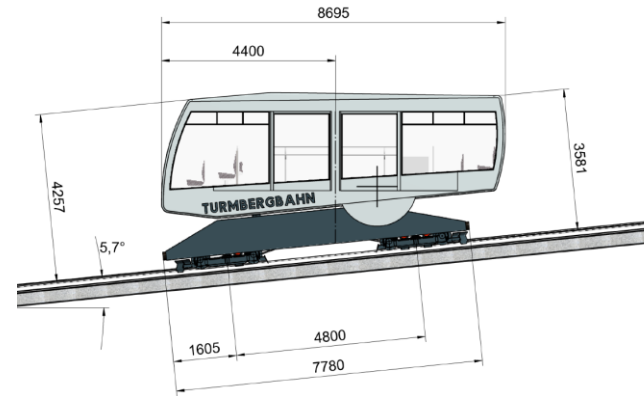


Anlage 1: Fahrzeug



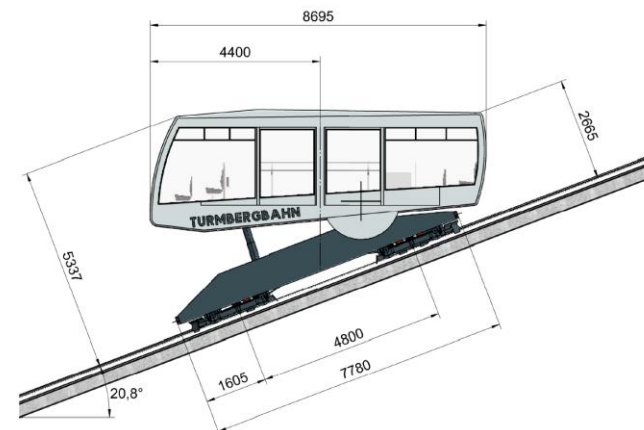
Situation flachste Stelle

Schiennenneigung = 10% / 5.7°



Situation steilste Stelle

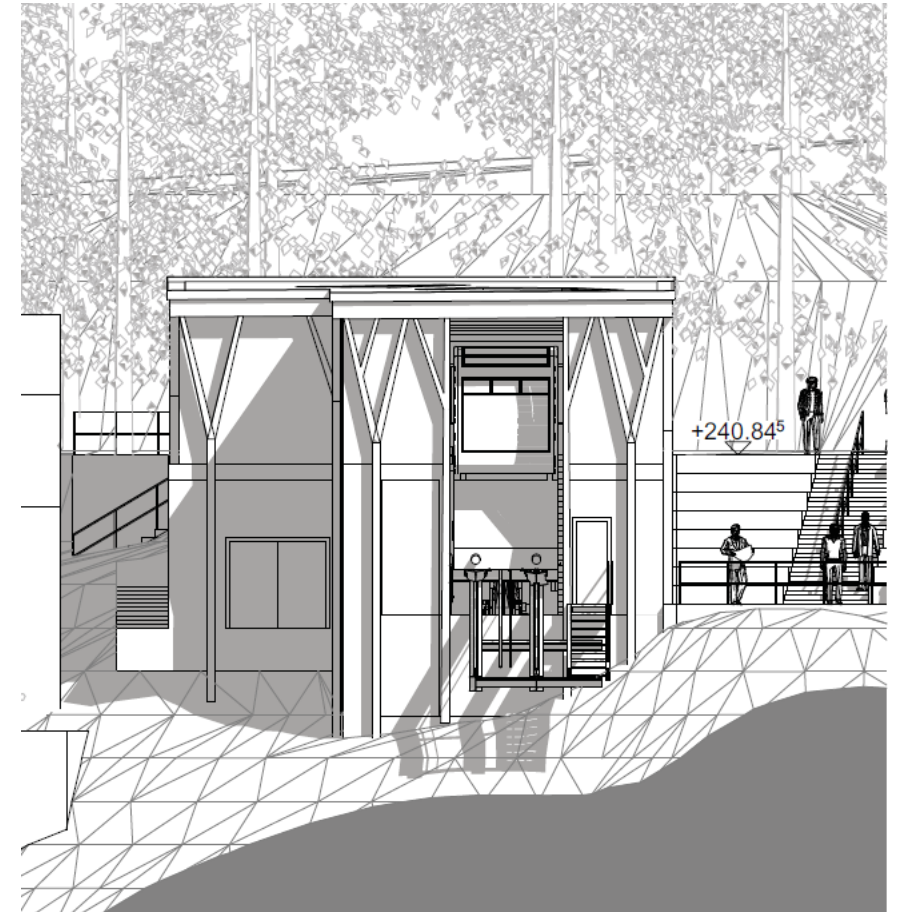
Schiennenneigung = 38% / 20.8°



Anlage 2: Talstation und Streckenbegrenzung



Anlage 2: Bergstation



Westfassade

Anlage 3: Höhenfreie Querung

