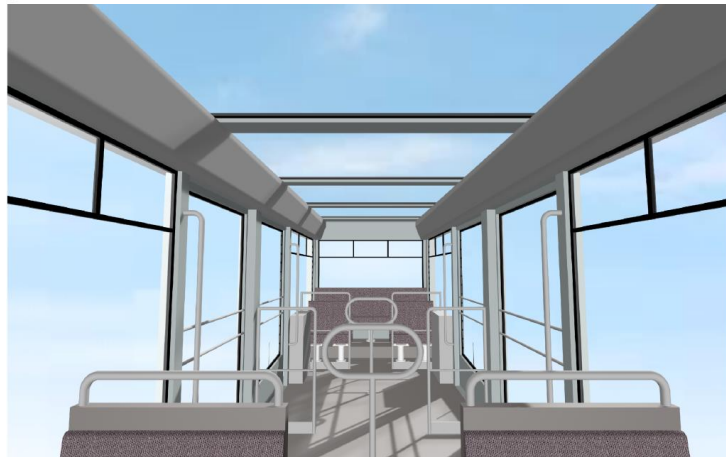
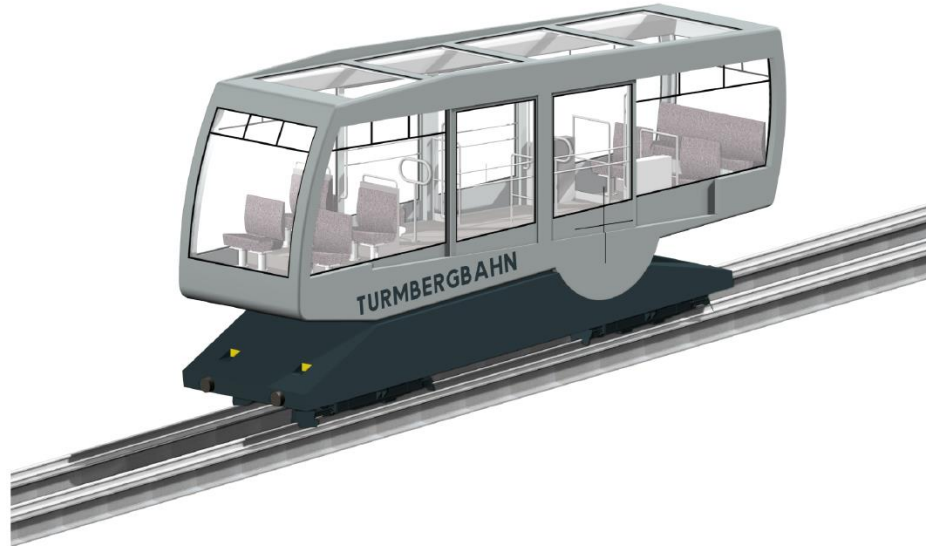
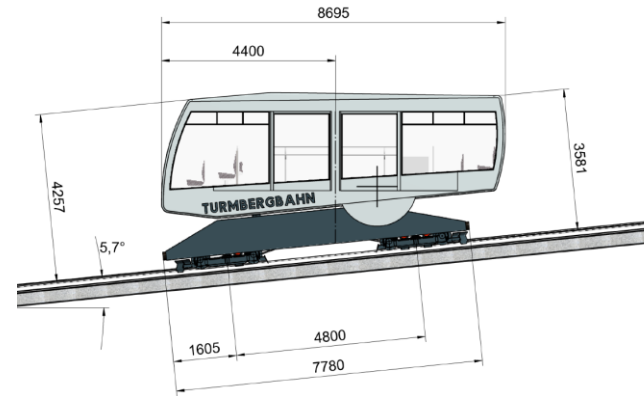


# Anlage 1: Fahrzeug



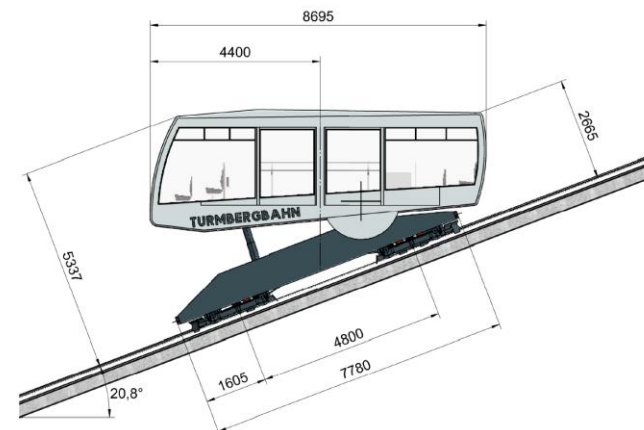
Situation flachste Stelle

Schienneneigung = 10% / 5.7°

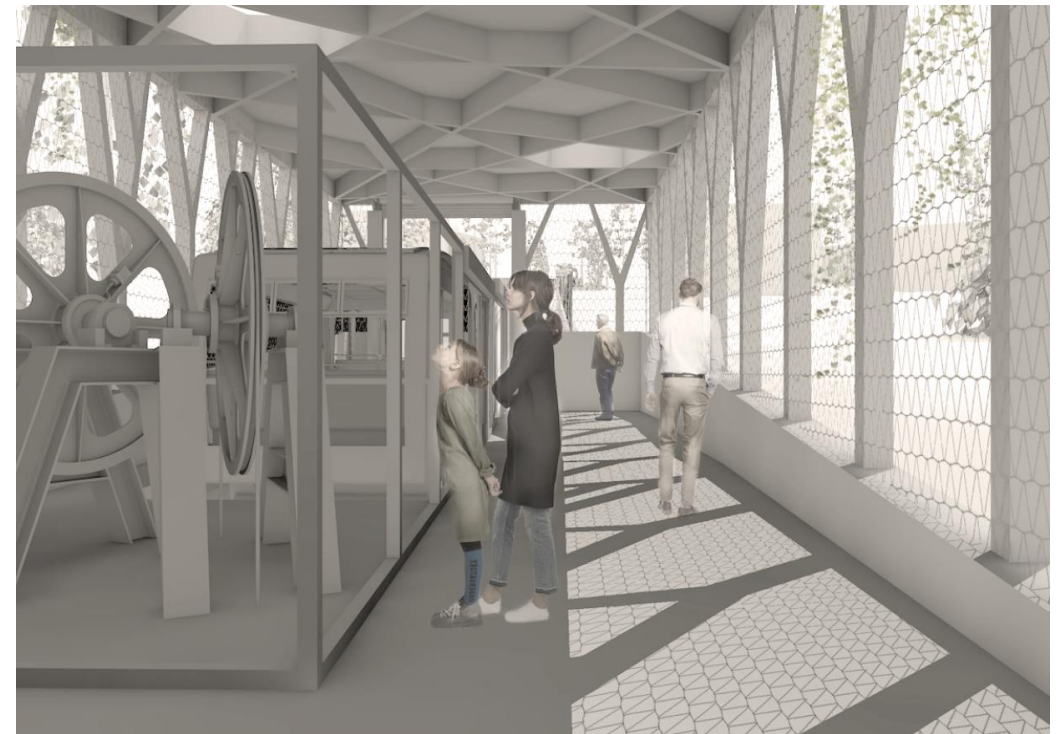


Situation steilste Stelle

Schienneneigung = 38% / 20.8°

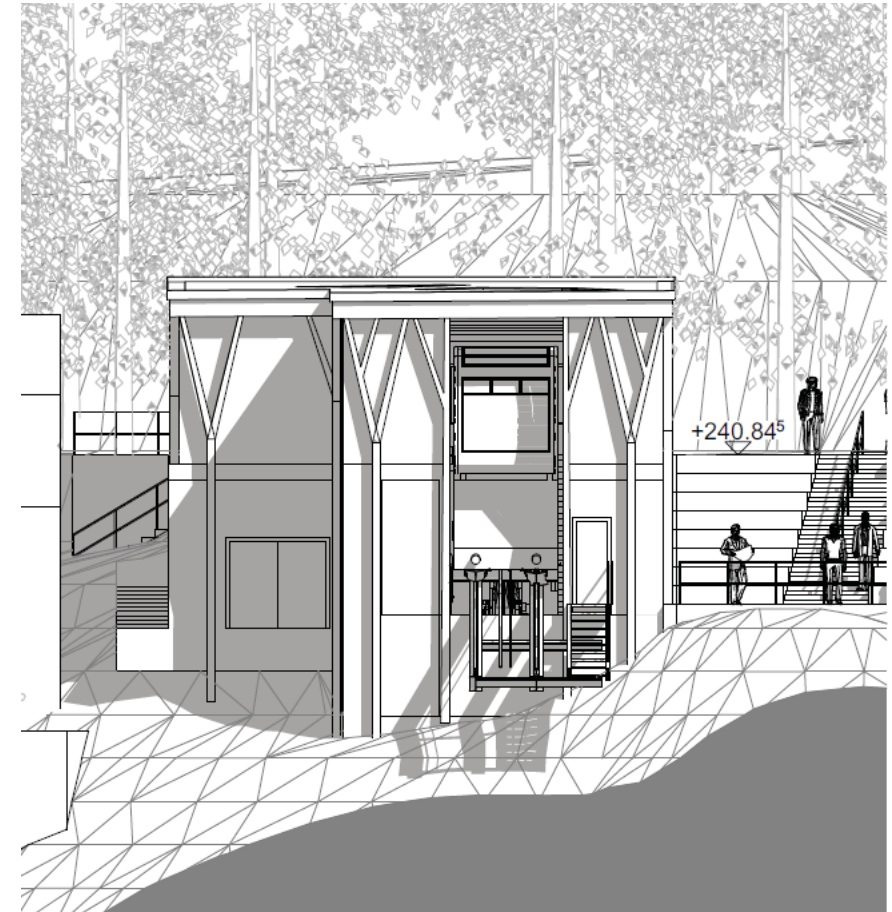


## Anlage 2: Talstation und Streckenbegrenzung





## Anlage 2: Bergstation



Westfassade

## Anlage 3: Höhenfreie Querung

